

From: [Sollmann, Lorenz](#)
To: [BrownScott, Jennifer](#)
Subject: Eelgrass Survey maps
Date: Monday, September 26, 2016 12:47:26 PM
Attachments: [DNGtidelandPresAbsen Eelgrass9.26.16.pdf](#)
[DNGtidelandPresAbsen Eelgrasswtracklogs.pdf](#)
Importance: High

Jennifer,

Here are the 2 maps, one with the track logs displayed the other without for a cleaner copy.
Some comments about the maps:

- There are 2 track logs all from different days (7/1, 7/19) but the 2 units were combined by date.
- There was a short glitch with capturing the track log on 7/1 and in the NE quarter the blank area along the boundary was actually walked. Also, in the same NE quarter there is a big empty area with no eelgrass or track log date. This area was walked by volunteers or staff without a GPS unit. These observers were walking between observers caring the GPS units. Additionally this area appeared to be the highest in elevation, therefore, the most time out of the water, and where a harder substrate exists with shell fragments.
- The 7/1 track line was from Ralph's GPS unit.
- The breakdown for the number of plants was to separate out the 1-2 just as hits for presence, but that the 3 and up would indicate the location of what our understanding of the ACOE definition considers a bed.
- A number of points were collected on both days with the same information. Of those that were repeated one set was removed.

There certainly are many points very close to each other that could have been captured as a polygon during the survey. We were not making any determination if some of these points separated by less than a meter or so should be collected in a different way. If nothing else, the survey does inform us that when oyster production was active and there was no eelgrass stated to be present, that in the intervening closed years the eelgrass has come back.

Thanks,
Lorenz Sollmann
Deputy Project Leader
Washington Maritime National Wildlife Refuge Complex
715 Holgerson Rd. Sequim, WA 98382
360/457-8451 - fax 360/457-9778

Legend

Combined Eelgrass Points A B

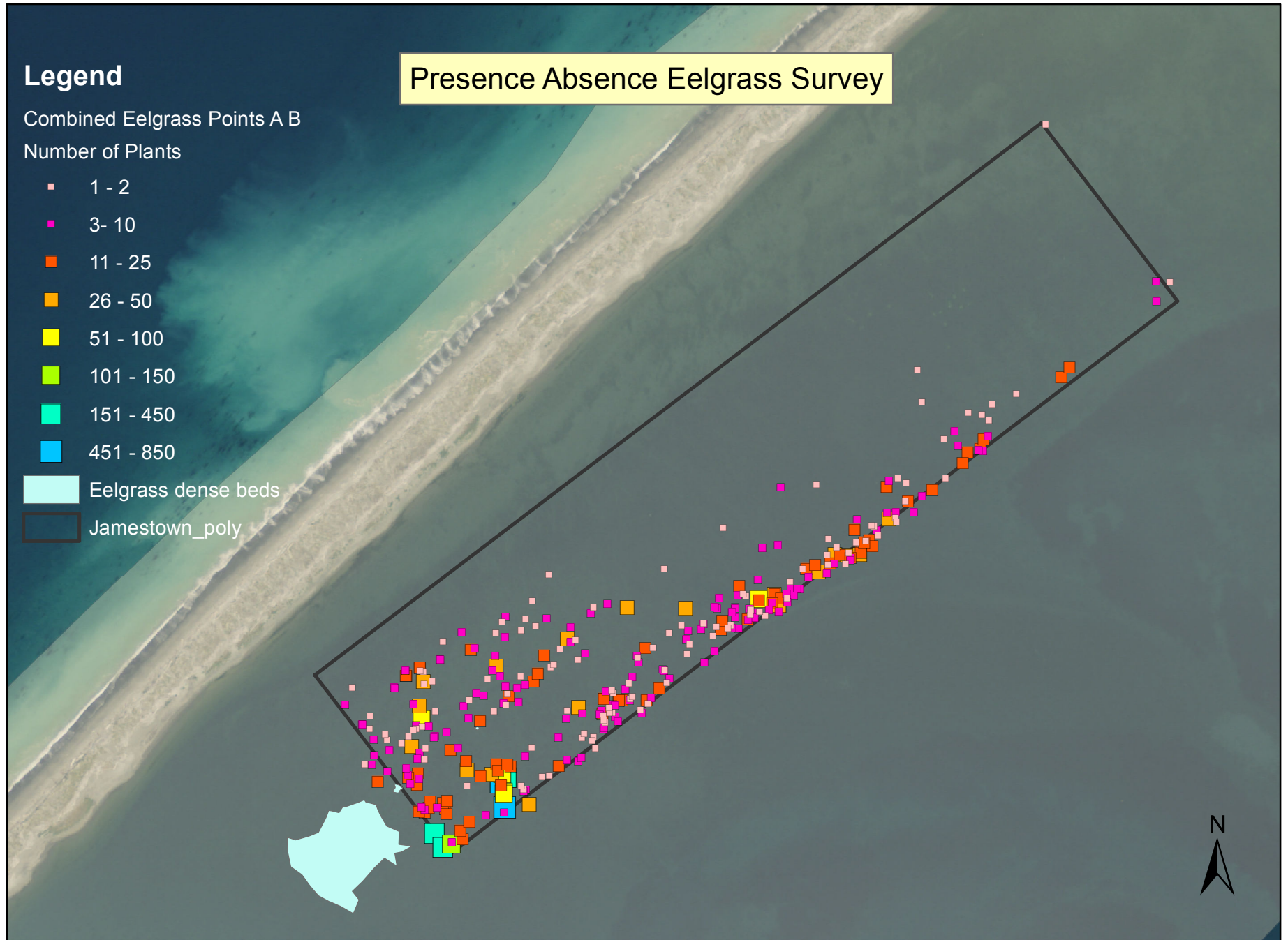
Number of Plants

- 1 - 2
- 3- 10
- 11 - 25
- 26 - 50
- 51 - 100
- 101 - 150
- 151 - 450
- 451 - 850

■ Eelgrass dense beds

■ Jamestown_poly

Presence Absence Eelgrass Survey



Legend

Combined Eelgrass Points A B

Number of Plants

- 1 - 2
- 3 - 10
- 11 - 25
- 26 - 50
- 51 - 100
- 101 - 150
- 151 - 450
- 451 - 850

■ Eelgrass dense beds

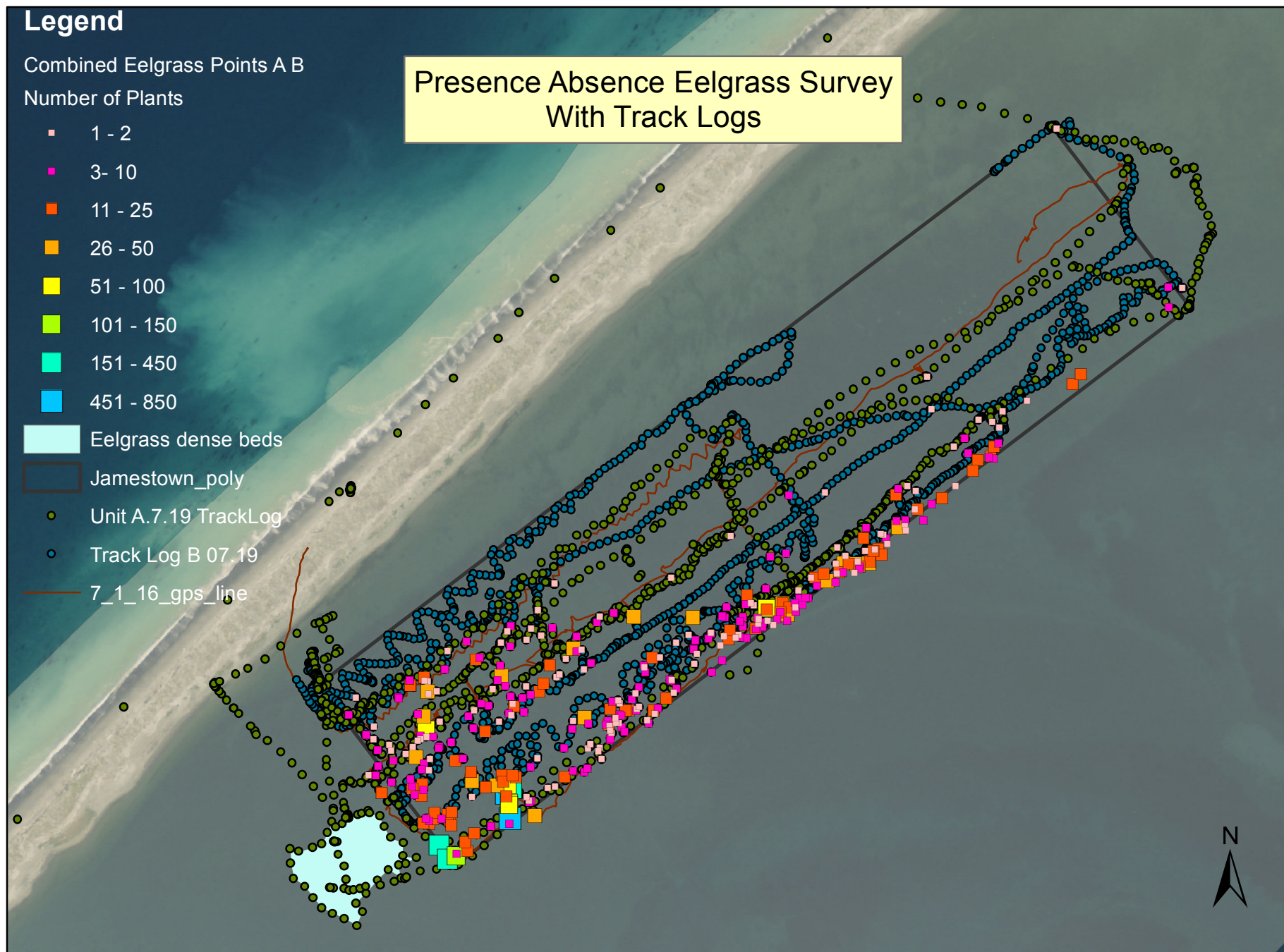
■ Jamestown_poly

● Unit A.7.19 TrackLog

○ Track Log B 07.19

— 7_1_16_gps_line

Presence Absence Eelgrass Survey With Track Logs



Map created by Lorenz Sollmann, 09.26.2016, S:\GIS_PROJECTS\Lorenz\MXD Workspace\DNgtidelandPresAbsenEelgrasswtracklogs.mxd